

Presentation to:

The Review Board
on
**The Future of Local
Government Review**

10 August 2023
at The Grange, Campbell Town

Mayor Mary Knowles OAM,
Deputy Mayor Janet Lambert
&

Maree Bricknell, Acting General Manager,
Northern Midlands Council

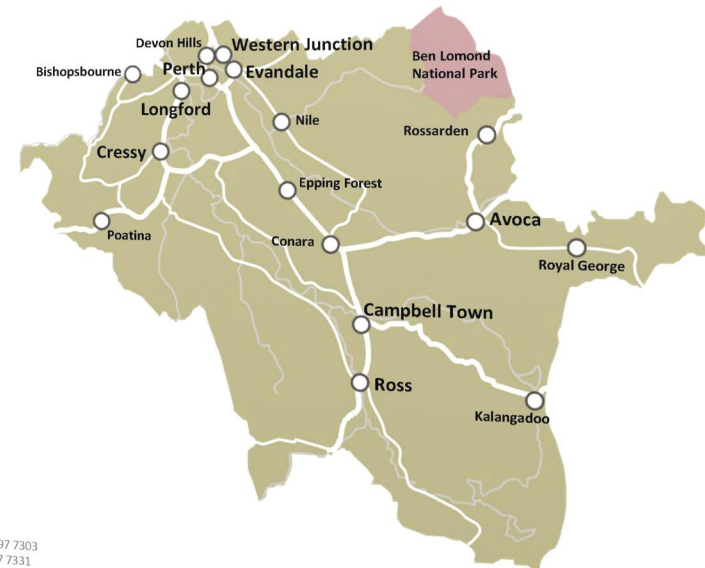


NORTHERN
MIDLANDS
COUNCIL

FUTURE OF LOCAL GOVERNMENT REVIEW - STAGE 3

SUBMISSION TO STATE GOVERNMENT

LOCAL GOVERNMENT BOARD



P.O. Box 156
Longford Tas 7301
Telephone (03) 6397 7303
Facsimile (03) 6397 7331
www.northernmidlands.tas.gov.au

1 August 2023

Tasmania's Historic Heart

Response to the Future of Local Government Review



- We are capable of providing for community needs and we have worked hard to establish and implement Council's Strategic Plan and associated strategies. Council is most appreciated for its representation and accessibility, trust and public engagement
- Our Council is impacted by all of the scenarios presented in the Central and Midlands Community Catchment Information Pack and one of the scenarios in the Tamar Valley Community Catchment Information Pack
- We do not support forced or voluntary amalgamation of NMC and a majority of residents agree with us
- We reject any change to our existing boundaries
- We support targeted local government reform, including voluntary amalgamations for council's who mutually agree to the amalgamation occurring
- We are very concerned about the likely negative impact any changes to municipal boundaries would have on smaller, more rural communities located within the municipality if forced boundary adjustments are made
- The Review does not take into account the impact on the historic and cultural connections between NMC's townships, villages and rural communities which are integral to the current social capital and sense of belonging
- No data was provided as to how economies of scale would deliver costs savings to ensure ratepayers do not bear any future financial burden arising from any proposed reforms

Response to the Board's Structural Reform Principles



Be Resolutely Focused on Future Community Needs

(not just tied to council's existing structures and current priorities)

- Council has been at the forefront planning for and anticipation of future community needs, including a number of capital works projects, disaster recovery plans, strategies and strategic plans which will continue to provide for the needs of the community

Council's Community Strategies



Response to the Board's Structural Reform Principles



Retaining Jobs & Service Presence Locally

- The ability to retain staff is a broader issue and not limited to the local government sector
- Council employs staff locally where possible & along with elected members, local staff know local community issues
- Council supports its local economic development association (NMBA) which plays a role in retention of local jobs and services
- As per REMPLAN Economy 2023 data, Northern Midlands supports 5,991 jobs and has an annual economic output of \$2.095 billion
- Agriculture, forestry, and fishing employment sectors support an estimated 1,134 jobs
 - Manufacturing - 782 jobs
 - Construction - 630 jobs
 - Healthcare and social assistance - 536 jobs
 - Transport, postal & warehousing - 526 jobs
 - Wholesale trading - 505 jobs
 - Retail trading - 434 jobs
- Many of the manufacturing and construction jobs are based in the thriving TRANSlink commercial, industrial and logistics precinct adjacent at Western Junction

Response to the Board's Structural Reform Principles



Preserving & Enhancing Local Voice

Council effectively provides for local voice, including:

- Local District Committees
- Special Committees
- Partnerships, including
 - Northern Midlands Business Association
 - Heritage Highway Association
 - Northern Tasmania Development Corporation
 - Visit Northern Tasmania
 - Tamar Estuary & Esk Rivers program
 - Northern Tasmanian Waste Management
 - Regional Emergency Management

Supported by fair funding models that smooth financial impacts for communities

- We maintain a differential rating system to smooth valuation shocks in land use categories
- Council has stable grant funding levels
- Long Term Strategic Asset Management Plan
- Long Term Financial Plans
- Master Planning of new infrastructure & facilities

Response to the Board's Criteria for the Review

Place & Representation

- Elected members have a close connection to the community with strong representation across the municipal area
- The Review does not take into account the historic and cultural connections between NMC's townships, villages and rural communities which are integral to the current social capital and sense of belonging which if amalgamations occurred would be impacted
- The Northern Midlands has a vast and rich historical heritage, including a large number of heritage listed infrastructure (Ross Bridge), buildings and villages (Ross, Evandale), including two UNESCO World Heritage Convict Sites (Brickendon and Woolmers Estates)
- Our heritage villages and towns are high value assets and our Planning Scheme provides protections and instils these values through Local Provision Schedules
- We actively promote the liveability and strong agricultural and industrial economic benefits



Response to the Board's Criteria for the Review

Future Needs & Priorities

- Council is well equipped to meet the future needs and priorities of its community
- Council recognises the increasing importance of climate change with emphasis being on allocation of funds or seeking grant funding assistance to protect the community from its impacts
- Volunteers are important to NMC and are supported by working with community organisations to assist Council to be responsive to community needs
- Council actively advocates for the health needs of the community, including sourcing a general practitioner for the local residents in the Evandale area, opening of our Perth Early Learning Centre and lobbying for a Northern Midlands Community House at Longford
- NMC is active in providing excellent active and passive recreation facilities, including
 - municipal pools
 - gym facilities
 - health & youth programs
 - walking/cycling pathways
 - access to pristine rivers & lakes to pursue leisure activities
- The provision and ongoing upgrade of these facilities in small rural communities would not be a priority for a larger Council with a predominantly urban population



Response to the Board's Criteria for the Review

Financial Sustainability

- NMC is in a strong financial position to continue to deliver on community assets
- NMC has a balanced long-term operating budget, cash to cover commitments/liabilities, and a capital works budget to expand and maintain infrastructure assets into the future



Operational Capability

Council has proven over several years that it has the operating capacity to deliver and plan for major projects, including

- development and upgrades to the Longford Recreation Ground facilities and Sports Centre
- establishment of the Ross Village Green
- construction of a purpose-built multi-purpose regional recreation facility in Campbell Town
- construction of a purpose-built Perth Early Learning Centre
- Cressy Memorial Pool upgrades
- Stormwater planning and implementation in the Sheepwash Creek area
- Longford Memorial Hall upgrades

Analysis & Response

Community Connection & Representation

- The Northern Midlands' is an enviable place to visit, work and live
- People choose to live and work in the Northern Midlands because of the sense of pride of place and a connected vibrant rural community
- If any of the proposed scenarios are implemented by the State Government, this would detrimentally impact on the connectivity and community identity of the Northern Midlands



Analysis & Response

Infrastructure

- Community infrastructure is recognised as the cornerstone of regional prosperity. Infrastructure creates jobs, enables sustainable growth, protects the environment, and fosters a thriving community by bringing people and business together
- NMC has a demonstrated history of maintaining and improving its infrastructure and assets
- NMC has developed an Integrated Priority Projects Plan 2021 (IPPP 2021), which takes a fresh approach to infrastructure planning, using an integrated method to align with local, regional, state and federal plans. Council recognises that too often infrastructure projects are planned and delivered in isolation

In the past 5 years Council has purchased and/or constructed \$42m of new and renewed infrastructure, including community facilities

- Campbell Town Recreation Ground Complex \$5m
- Cressy Swimming Pool & Cressy Recreation Ground upgrades \$2.7m
- Evandale Recreation Ground upgrades \$1.1m
- Longford Recreation Ground complex and Sports Centre/Gym upgrades \$5.4m
- Construction of an Early Learning Centre at Perth \$4.2m
- Ross Village Green establishment \$1.1m

Analysis & Response



Infrastructure (continued)

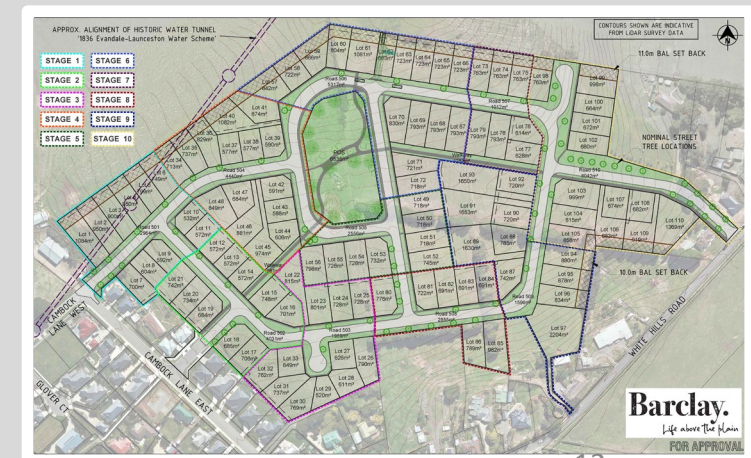
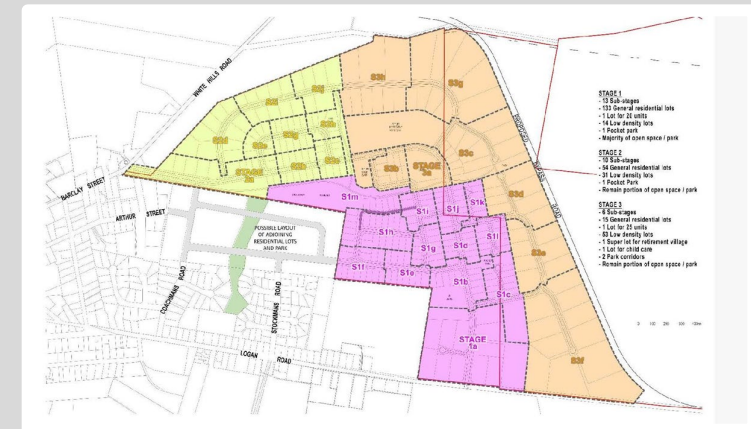
NMC's 2023/2024 Budget is financially strategic and ensures it has money for the things the municipality needs. NMC's major projects for the next 12 months are:

- Extension and refurbishment of the Longford Memorial Hall \$4.0m
- Commence Main Street Improvement works of Campbell Town, Longford and Perth \$5.8m, (in addition to the \$8m commitment of the Labor federal government towards the continued improvement to the Campbell Town and Perth main streets)
- Replacement/upgrade of 3 concrete bridges on Liffey Road, Jones Road and Blackwood Creek Road after October 2022 flood damage \$1.1 m
- Reconstruction of sections of Bishopsbourne Road near Toiberry rail crossing, and Ashby Road at Ross \$1.0m
- Development of a new public reserve at the corner of Laycock/ Pultney/ Wellington streets at Longford \$0.5m
- Continuation of the urban street footpath program (Campbell Town, Cressy, Longford, Perth & Ross) \$0.9m
- Construction of new amenities at the Longford Caravan Park \$0.45m
- Road reconstruction, kerb and footpath for Youl Main Road, Perth \$0.35m
- Provision of an entrance statement on the Illawarra Road roundabout to Longford \$0.2m
- Playground Equipment upgrades at the Train Park at Perth, Pioneer Park at Evandale, and Bartholomew Park at Cressy \$0.5m
- Provision of larger street bins and purchase of a small waste compactor vehicle \$0.3m

Analysis & Response

Urban Growth

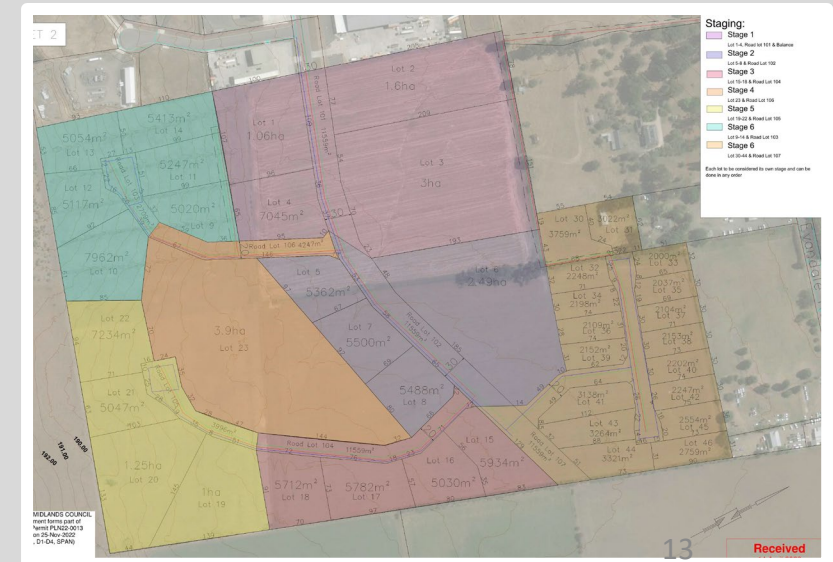
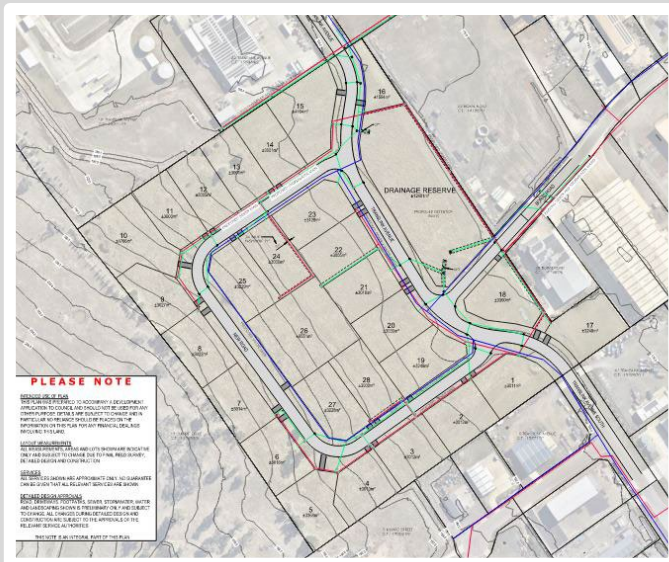
- Northern Midlands enjoys a balanced mix of industrial, business, agricultural, community, environmental and residential zones
- Northern Midlands is growing rapidly & is attractive to residents who want the benefits of a residential/rural lifestyle while still being within commuting distance of a larger urban area
- The variety of lot-sizes and zoning will cater for a wide variety of residential needs, including first home buyers, family homes, homes in more rural settings with larger lot sizes and downsizers
- The municipality has a number of recognised future urban growth areas, including in South & West Perth South Longford, and North & East Evandale, approved subdivisions include:
 - 116-lot 19.14ha subdivision - Napoleon Street, Perth including a new municipal park & stormwater detention area
 - 17-lot 1.23ha subdivision - Laycock Street, Longford (including new municipal park)
 - 44-lot 6.254ha subdivision - Marlborough Street, Longford
 - 28-lot 1.763ha subdivision - Catherine Street, Longford
 - 26-lot 23.3ha subdivision - Haggerston Road, Perth
- Council is also aware of proposed planning applications from developers which are yet to be lodged which involve large scale subdivisions and development, including
 - 200-lot subdivision on Logan Road, Evandale, and
 - 110-lot subdivision at Cambock Lane/Barclay Street, Evandale



Analysis & Response

Urban Growth (continued)

- Commercial and industrial growth in Northern Midlands is also projected to expand in the TRANSlink Industrial area of Western Junction
- Recently approved planning applications for the expansion of Translink Avenue industrial area, including a 41-lot 33.32ha subdivision to the southern end & a 29-lot 13.41ha subdivision joining the northern & southern ends of Translink Avenue
- Council has received a funding commitment of \$5m from the Federal Government for the planning process of a TRANSlink Intermodal Facility, with further funding commitment of \$30m for the implementation and delivery of infrastructure for that development
- Renewable energy planning applications include: the Northern Midlands Solar Farm & the Great Lakes Battery Projects
- As active members of NTDC the Mayor & General Manager have travelled to Canberra with other NTDC members to successfully lobby for funding for major Northern Tasmanian infrastructure projects such as: the Bell Bay hydrogen project \$120m, UTAS Stadium upgrade \$65m & \$35m for NMC's TRANSlink Intermodal Facility project.



Analysis & Response



Financially Sustainable

NMC has adopted a strategic approach to the renewal and replacement of community assets and infrastructure and has successfully completed and delivered many projects by applying for and being successful in receiving external funding grants.

- NMC holds concerns that if it was required to merge into a larger municipal area, opportunities tied to grant funding may be lost which will ultimately negatively impact our community
- Further, the impact of amalgamations on existing grants already received has not been canvassed and there is a risk of loss of grant funding due to ineligibility

- Underlying Surplus Ratio 9% (4.4% calculated by Consolidated Data Collection)
- Operating Revenue \$22.8m: including Rate Revenue \$12m; 7,460 rateable properties
- Cash & Investments \$26m (non-interest bearing borrowings \$4.05m)
- Property, Infrastructure, plant & equipment \$535m (written down value of \$390m)

Analysis & Response

Response to Proposed Scenarios

- TRANSlink Industrial area is a strategically located industrial and business hub servicing many of the North's multi-million dollar industries
- Any loss of this area is vehemently opposed as it would result in greater financial burden being placed onto rural landowners and residential ratepayers. This area is vital to the financial wellbeing of our municipality
- NMC has worked hard to develop this area and grow this part of its local economy
- NMC opposes the City of Launceston's proposal to adjust municipal boundaries such that Western Junction and TRANSlink industrial areas are incorporated into any future Tamar Valley council



Alternate Reform Options



- If the State Government was to change its position on the announcement of not forcing amalgamations or boundary adjustments, NMC's position regarding the proposed scenarios in the Information Packs remains unchanged
- While not NMC's preferred position, it would consider amalgamation with Meander Valley on the basis both LGAs retain all of their existing municipal areas – that is Longford, Perth, Evandale, TRANSlink, Prospect Vale, Blackstone Heights, Carrick and Hadspen
- This consideration is on the basis that Meander Valley has similar geography to Northern Midlands (part urban, part rural/agricultural) and is a similar community of interest
- NMC and Meander Valley have a history of shared service arrangements in place, there are continued opportunities for resource sharing across the two councils and, in this way, all the current assets, strategic plans, corporate knowledge, staff and strong financial position would be retained
- NMC is open to consideration of shared service arrangements upon additional information being provided by the Board

The Northern Midlands: Liveability



The Northern Midlands Council has produced a series of short films to promote the Northern Midlands' liveability and visitor experiences



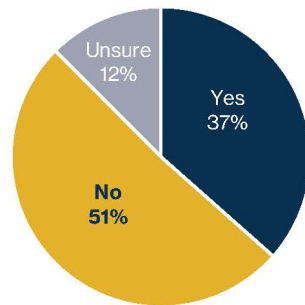
Our Residents & Ratepayers

The Northern Midlands Council engaged EMRS to conduct a survey of our residents to gauge their opinion on local government reform.

Council has now received the final report which is summarised below:

- There was a high level of awareness among residents of the Government's proposal to change the number of councils in Tasmania. A combined total of 91% were aware to some degree, with 67% stating that they were "definitely aware"
- Of the total sample, 82% confirmed that "yes", they were able to specify what the proposed changes were. The change most frequently mentioned, without prompting, was "merging/amalgamating local councils" (74%), followed by "reducing the number of local councils" (24%)

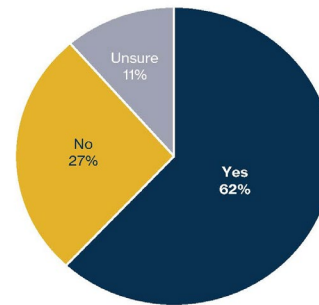
Chart 4 – Whether Northern Midlands Council Should Consider Amalgamating with other Councils
(Base: all respondents, n=449)



% of respondents (n=449)

Most residents surveyed felt that "no", Northern Midlands Council should not consider amalgamating with other councils (51%).

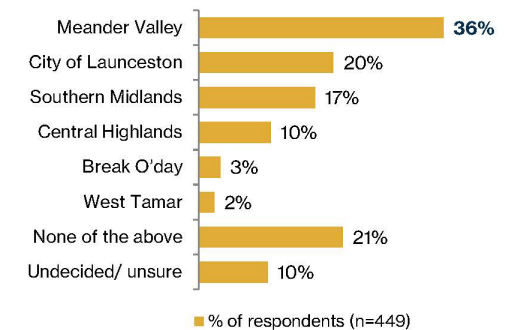
Chart 6 – Agreement with the Council to Not Amalgamate
(Base: all respondents, n=449)



% of respondents (n=449)

The clear majority of residents surveyed said "yes", they agree with the Council's decision to not amalgamate (62%).

Chart 5 – Which Councils Northern Midlands Council Should Consider for Amalgamation
(Base: all respondents, n=449)*



% of respondents (n=449)

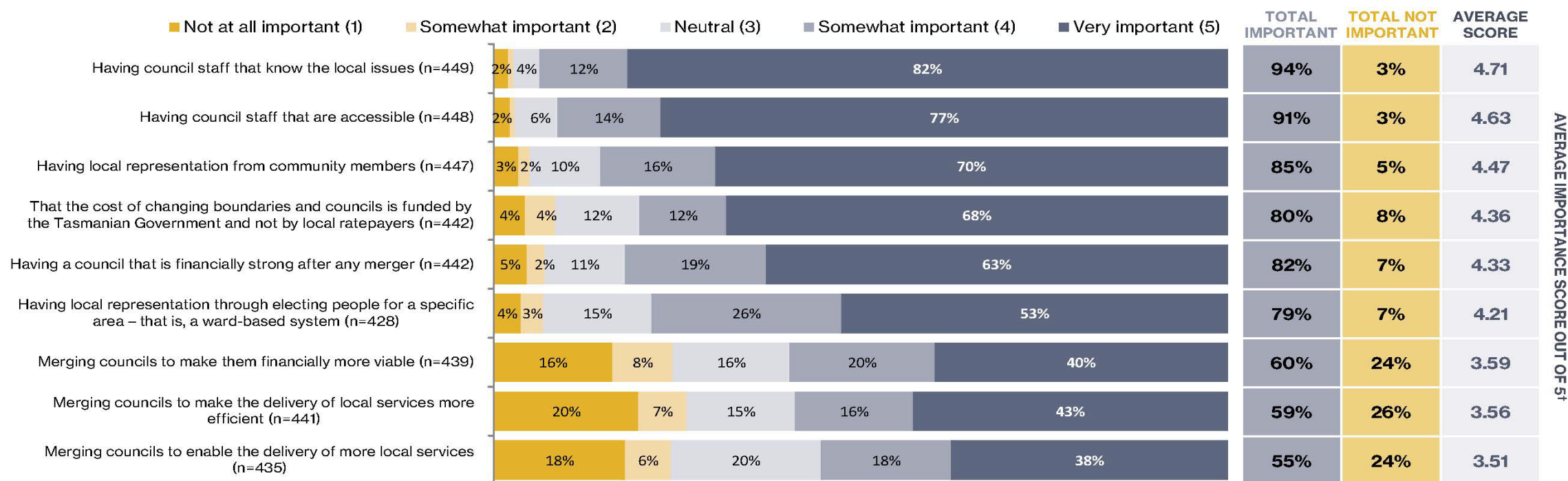
The respondents were significantly more likely to nominate "Meander Valley" as the adjoining LGA that Northern Midlands Council should consider for amalgamation if they had the choice (36%).

Our Residents & Ratepayers

Importance Placed on Aspects of Local Councils in Tasmania (1)

The respondents were prompted with a list of 9 statements about aspects of local councils in Tasmania. They were asked to rate the importance of each on a scale of 1 to 5, with 1 being “not at all important” and 5 being “very important”. **Chart 3** shows the responses, after excluding those who said “don’t know/ unsure”.

Chart 3 – Level of Importance Placed on Aspects of Local Councils in Tasmania (Base: all respondents, n=428-449)* **



* The percentages may not sum to 100 due to rounding.

** The respondent sample size (n=) figures for each statement varied and have been provided for each.

† The average score was calculated on the basis of the percentages of 1 to 5 scores given for each statement, after excluding the “can’t say/ unsure” responses.

Q. Below are some statements about aspects of local councils in Tasmania. Please tell me how important you think each is, on a scale of 1 to 5, where 1 is “not at all important” and 5 is “very important”.

Facts & Figures



Approximately 60% of the population resides in 5% of the area, that is, generally in the north which includes Longford, Perth and Evandale.

Council is responsible for maintenance of 960kms roads and 12,717m² bridge deck area; **more than any other council in the state.**

Council's annual turnover (all functions) in 2021/2022 was **\$23.3 million** (2020/2021: \$20.9 million).

Facilities maintained:

575kms of sealed roads



24 community halls/centres

4 waste transfer stations

385kms of unsealed roads



2 caravan parks

3 pools



250 concrete bridge structures (12,717m²)



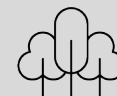
14 public toilet facilities

3 visitor information centres/kiosks

8 ovals for sporting activities



69 parks and reserves



- Long Day Childcare Services – Perth five days per week and Cressy Childcare Centre five days per week
- Midlands Kids Club After School Care Services, Perth
- Midlands Kids Club Vacation Care Services, Perth



- Lawn Cemetery, Rose Garden and Niche Wall, Longford
- Rose Garden, Evandale
- Lawn Cemetery, and Niche Wall, Perth



Council controls written down value of property, plant and infrastructure assets amounting to \$390 million; including:

\$78.4 million of land (including land under roads) and buildings

\$258.3 million of roads and bridges

\$42.2 million of stormwater infrastructure

\$11.1 million of other assets and works in progress

Our staff:

2021/22	Employees	FTE
Permanent	78	71
Casual	10	3
Total	88	74



Projects & Provision of Services



Bridge Replacement Program (2015-2021): Total Cost \$7.25M

Major Bridge Replacements:

- Westmoor Bridge Constructed
2015/2016: \$2.1m
- Lake River Bridge constructed
2016/2017: \$1.77m
- Woolmers Bridge Constructed
2018/2019: \$3m
- Pisa River Bridge constructed
2020/2021: \$0.38m

All Bridge Replacement & Works – last 10 years:

- 2012/2013: 4 bridges – Cost \$0.28m
- 2013/2014: 4 bridges – Cost \$0.75m
- 2015/2016: 4 bridges – Cost \$2.3m
- 2016/2017: 1 bridge – Cost \$1.77m
- 2017/2018: 2 bridges – Cost \$0.42m
- 2018/2019: 6 bridges – Cost \$3.7m
- 2019/2020: 4 bridges – Cost \$0.6m
- 2020/2021: 3 bridges – Cost \$0.95m
- 2021/2022: 2 bridges – Cost \$0.60m
- 2022/2023: footbridge – Cost \$0.15m

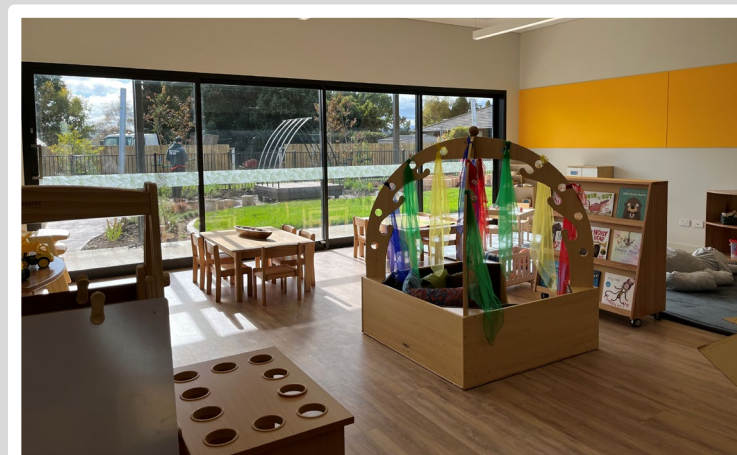
Bridge Assets:

- Box Culverts – 37 @ 952m²
- Pipe Culverts – 86 @ 1,241m²
- Concrete bridges – 124 @ 10,360m²
- Concrete footbridges – 2 @ 142m²
- Timber footbridge (historic with stone abutment) – 1 @ 29m²
- Total – 250 @ 12,724m²



Perth Early Learning Centre

- New purpose built facility
- Total cost: \$4.1 m
- Grant funding received: \$3.721 m
- Council purchased greenfield site in December 2018
- Day care capacity increasing from 25 to 46
- After hours care - capacity of 40



Campbell Town War Memorial Oval & Multipurpose Complex

- Total cost: \$5m
- Grants received: \$1.22m

The Complex has multiple users, including Football Club (men & juniors), AFL Tas & Tennis Club using the sporting facilities. Average weekly usage (excluding public pool usage) is 115 hours, approximately 2.9 times the normal hours in a working week.

Offers multi-function facility

- Function room
- Meeting rooms
- Commercial kitchen
- Sporting facilities, inclusive of a swimming pool
- Inclusive changerooms
- Amenities



Longford Recreation Ground

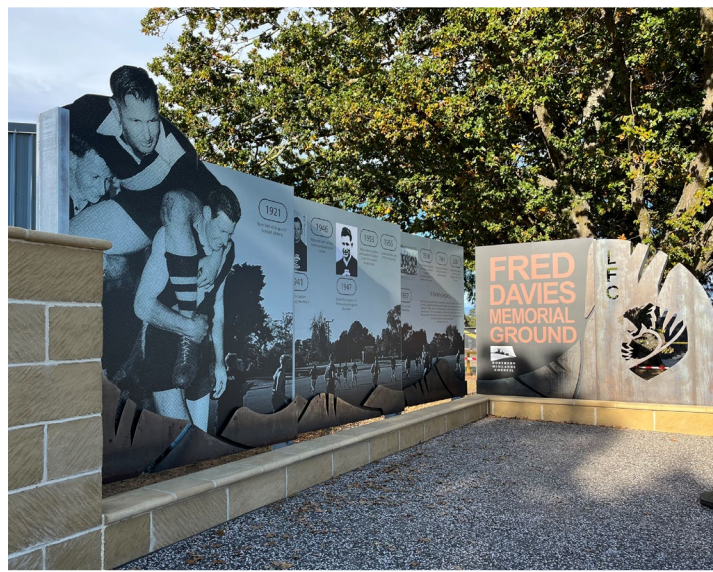


Stadium upgrade including new inclusive changerooms:

- Total cost \$2.2m
- Grants received: \$0.313m

User Groups include:

- Longford Football Club (male, female & juniors)
- Longford Cricket Club (male & female)
- Longford Little Athletics
- Longford Primary School



Morven Park, Evandale

Clubrooms upgrade, including
inclusive changerooms, and Cricket
Practice Facility relocation

- Total cost: \$1.1 m
- Grants received: \$0.772m

User groups:

- Evandale Football Club – male,
female & juniors
- Evandale Cricket Club
- Evandale Primary School
- Evandale Light Rail and Steam
Society



Northern Midlands Health, Fitness and Sports Centre



Centre upgrade including new gym and mezzanine floor:

- Total cost: \$2.2m
- Grants received: \$0.626m

User Groups include:

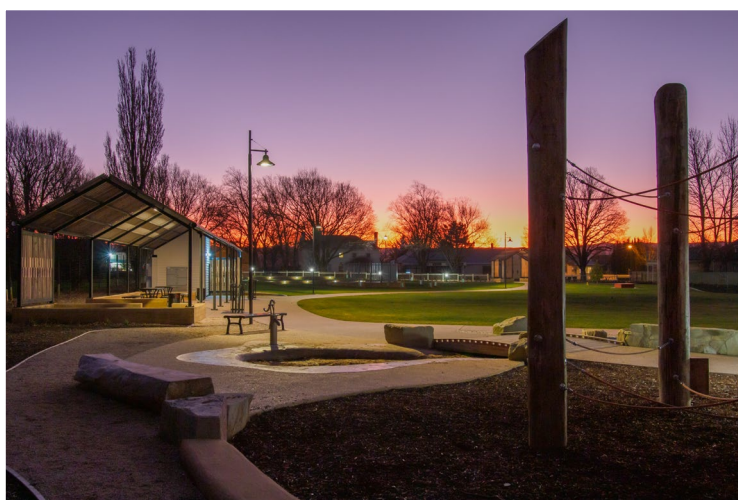
- Health Revival Longford
- Longford Squash Club
- Longford Netball Club
- Longford Football Club



Ross Village Green

Council developed a central public space where local residents and visitors of all ages and abilities meet to socialise, relax and participate in an array of formal and informal activities; the space includes an amphitheatre, barbecue facilities and amenities

- Total cost: \$1.1m (including land purchase)
- Grants received: \$385k (LRCI Round 1)



Cressy Memorial Swimming Pool



Precinct upgrade

- Total cost: \$1.5m
- Grants received: \$1.3m

User Groups include:

- School groups
- NMC's northern residents



Cressy Recreation Ground

Clubrooms upgrade including new inclusive changerooms

- Total cost: \$1.1m
- Grants received: \$0.207m

User Groups:

- Western Tiers Cricket Club (Cressy and Bracknell clubs combined)
- Longford Football Club (training)

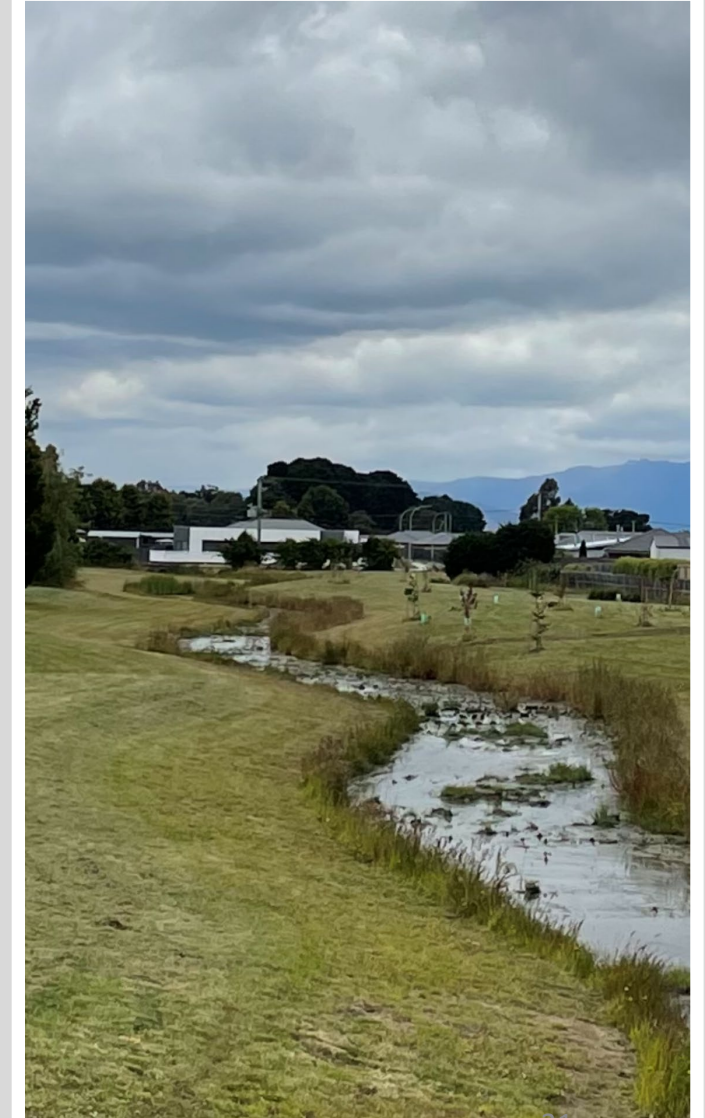


Sheepwash Creek

The Sheepwash Creek catchment is approximately 954 hectares in overall size and Council aims to bring forward stormwater planning work to complete a \$3.7m project to protect homes around Perth from extreme event flooding, the works will also include improvements to the Sheepwash Creek corridor to provide recreation and public open space

Current Grant Funding

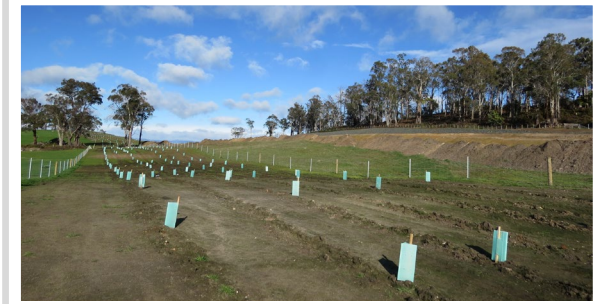
- Commonwealth Government's Disaster Ready Fund: \$3.7m

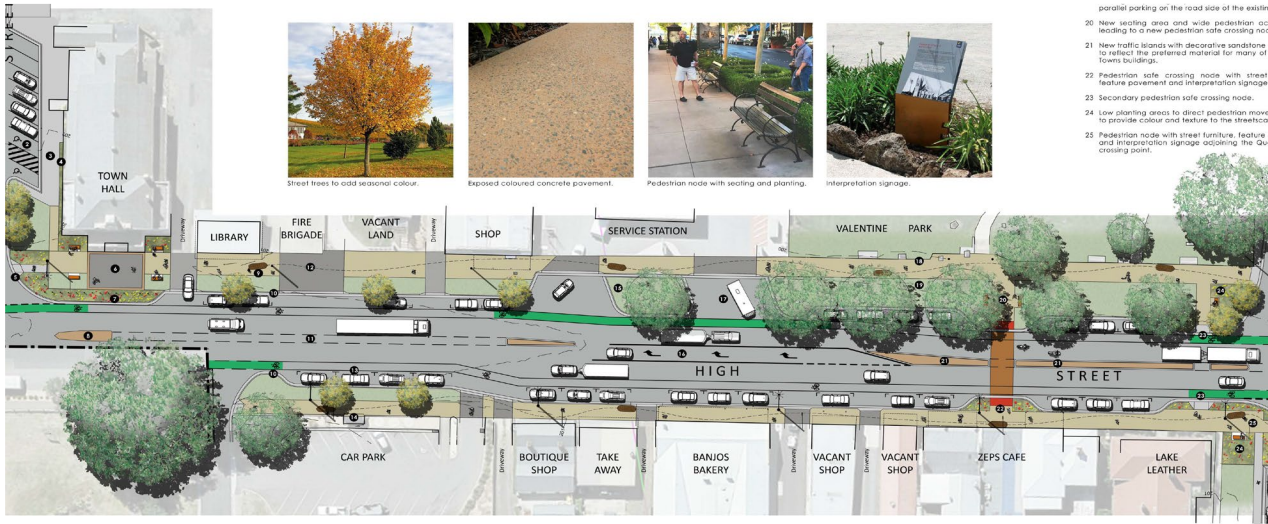


Other Projects

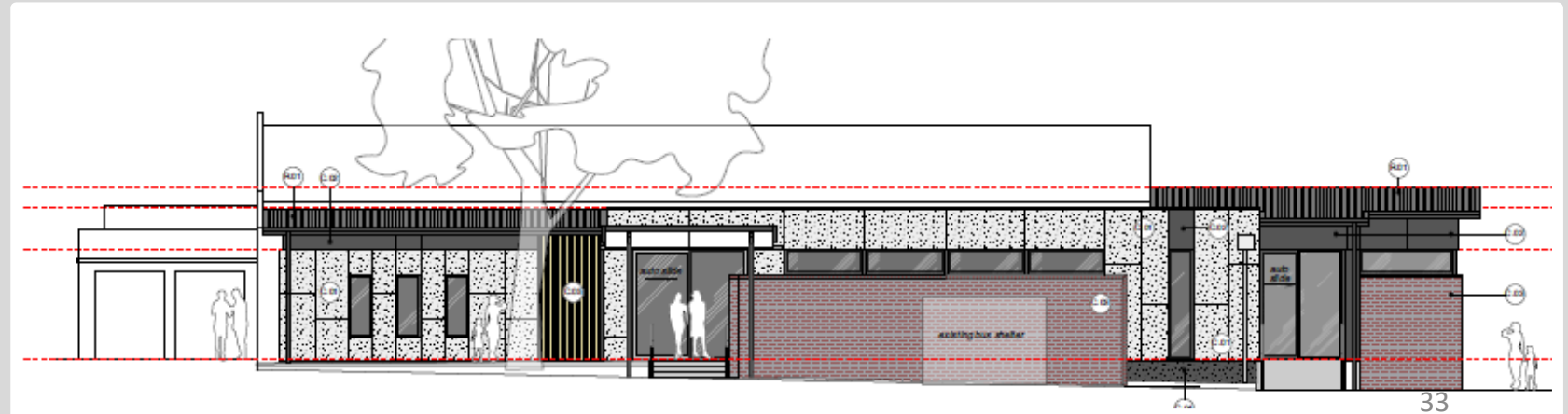
Council has introduced new services & programs and completed a number of projects, including, but not limited to the following:

- Detention basins
- Installation of solar panel to Council buildings
- Food Organic & Garden Organic kerbside collection
- Waste Recycling Trailer
- Flood levee gate automation
- Active Youth Northern Midlands health promotion
- Youth Free2B Girls Program
- Dog Parks
- Tourism Re-Assign Project
- Entrance Statements, Banner Poles & Banners for towns
- Tree planting
- Refurbishment of accommodation units at the Ross Caravan Park
- Upgrade of car parks
- Construction of new and upgrade of toilet amenities
- Upgrade and construction of sporting facilities and grounds, including electronic scoreboards and lighting
- Installation of bus shelters
- Construction of footbridge and walkway extension loop at Perth riverbank reserve
- Upgrade and installation of new playground equipment
- Installation of Christmas tree lights
- Art, history and wayfinding installations
- Redevelopment of Cenotaphs





Projects in Progress



TRANSlink Intermodal Facility

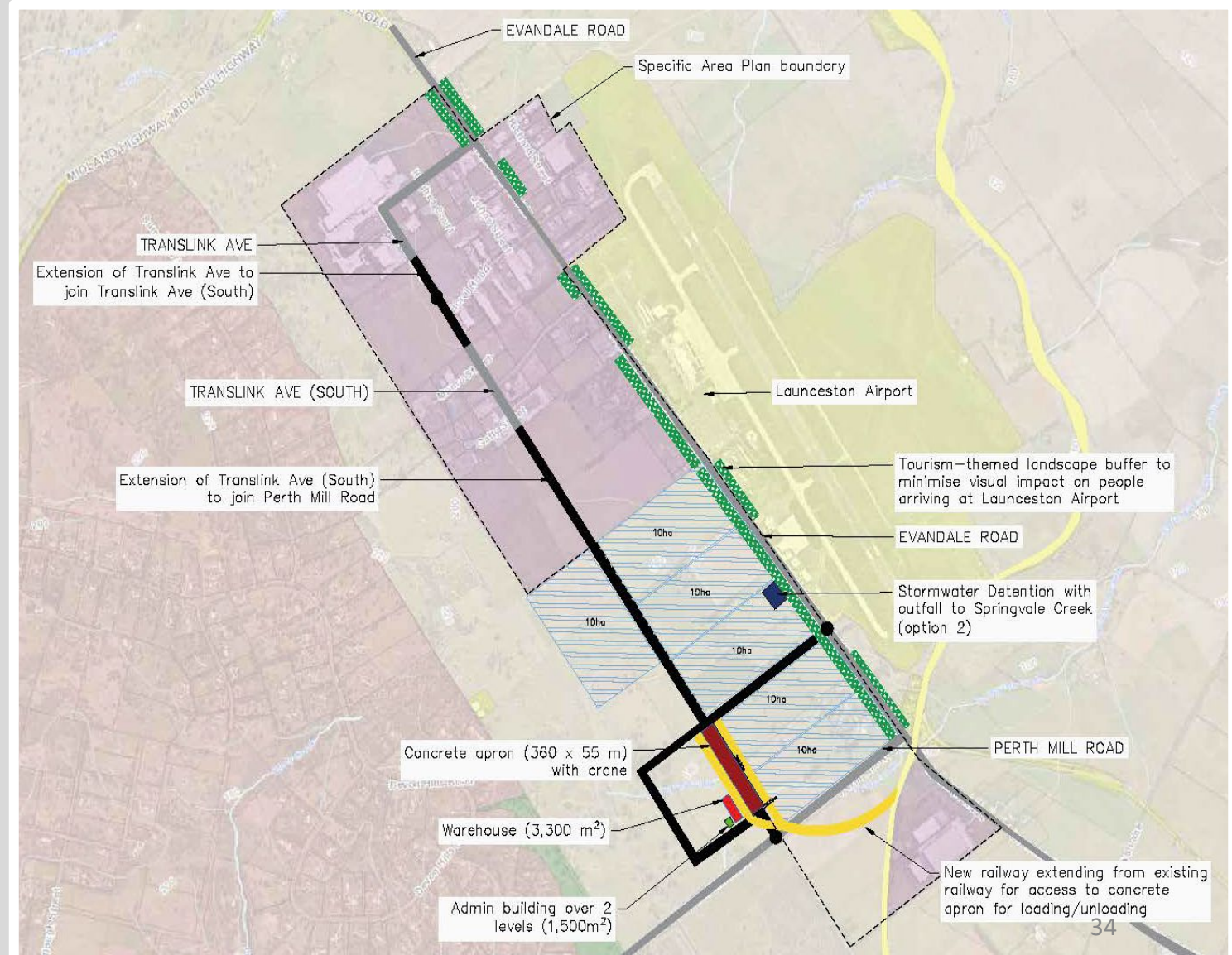
An intermodal site close to the main road, rail corridors and airport would potentially provide:

- All levels of government the opportunity to undertake an integrated and coordinated approach to deliver the best outcomes for infrastructure, transport, and land use planning
- A more efficient and safe freight transport system
- An improved regional freight network in northern Tasmania

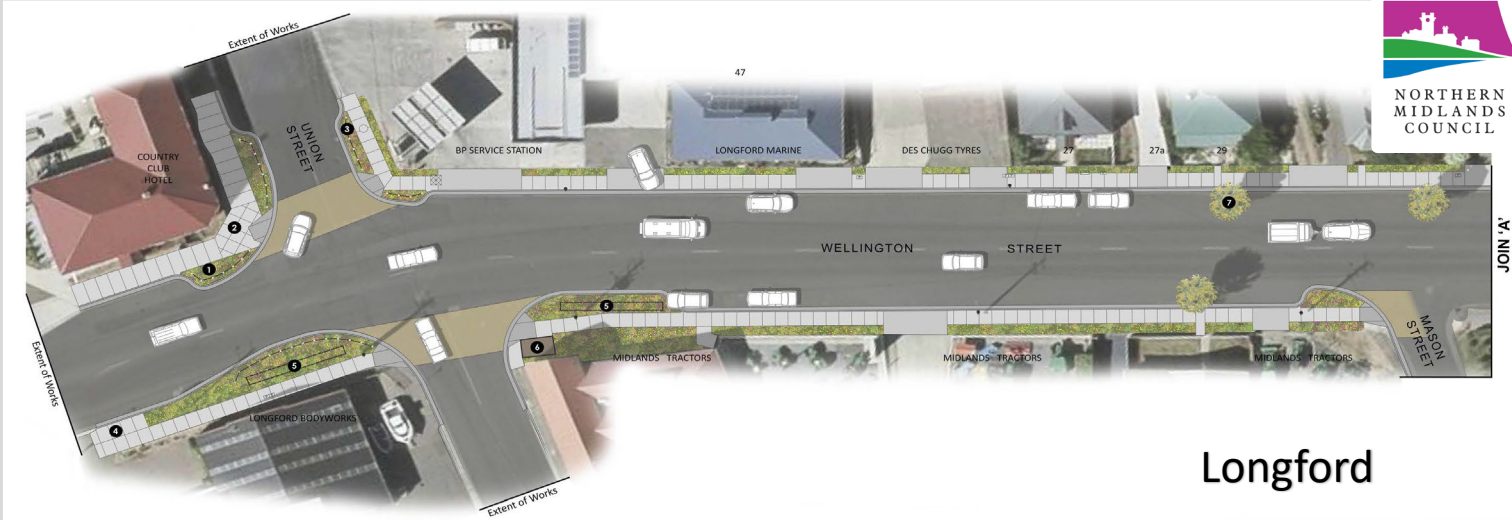
Federal Labor Funding Commitment:

- \$5m to commence planning process
- \$30m to deliver enabling infrastructure

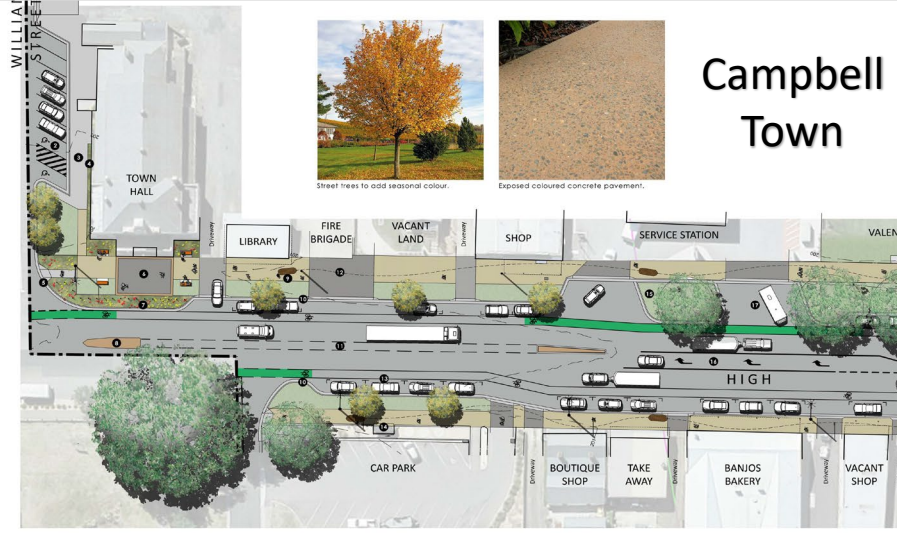
The TRANSlink precinct is adjacent to the airport and is growing quickly, with two new subdivisions approved totalling 46.73ha



Main Street Program



Longford



Campbell
Town



Federal Government Funding: \$8m
 Campbell Town: \$13m
 Longford: \$1.4m grant funding (final design being completed)
 Perth: \$6m



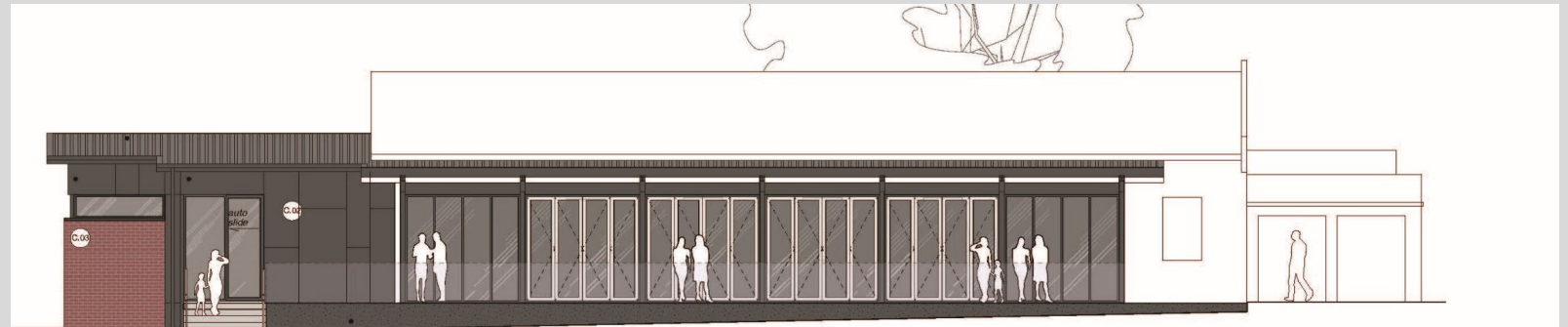
Perth

Longford Memorial Hall

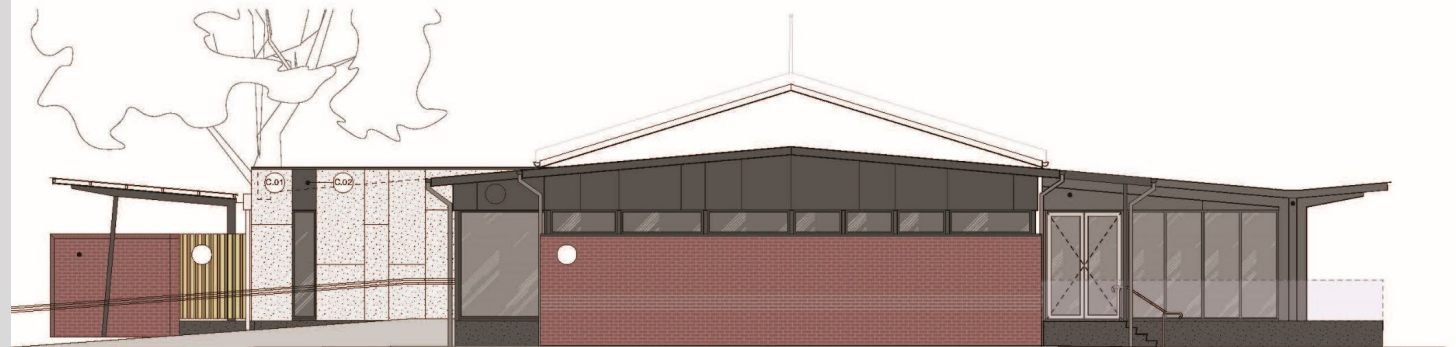
Total Cost: \$3.1 m

Federal election commitment
funding \$2.65m

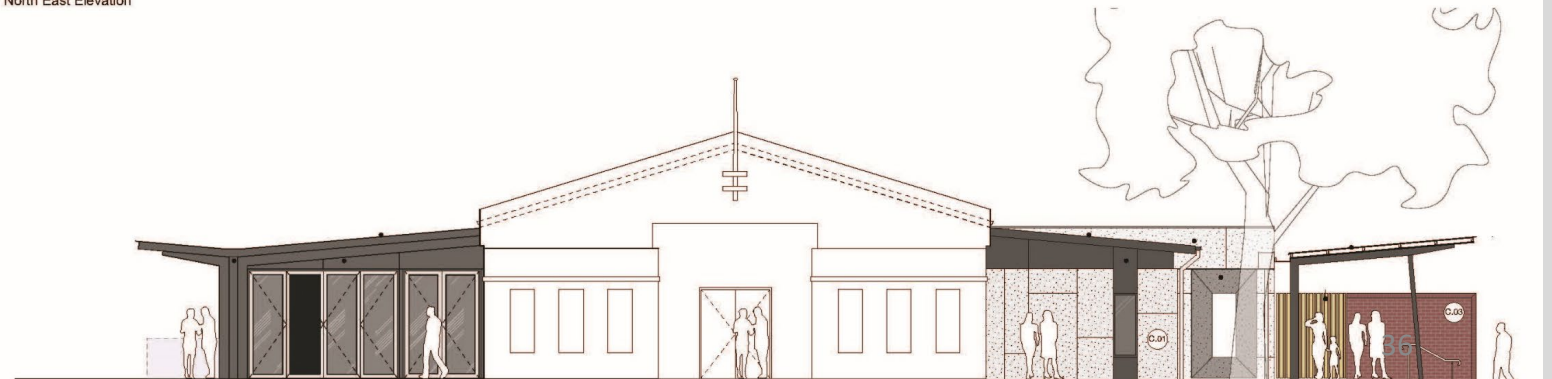
LRCIP funding \$0.46m



North West Elevation



North East Elevation



South West Elevation

Laycock Street Park, Longford

Part of a new subdivision at 7 Laycock Street Longford, Council acquired the triangle of land created by the meeting of Laycock, Wellington and Pultney Streets, to develop a public park

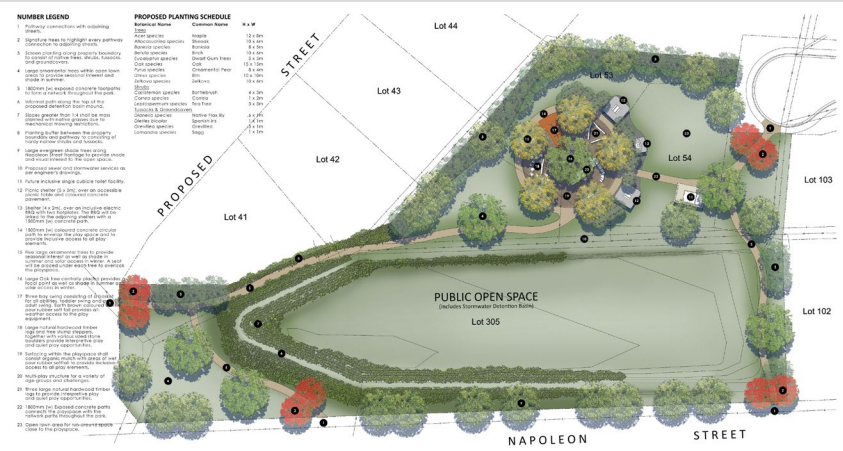
Council contracted Lange Design to develop a landscape concept plan for the Park that would provide a unique place for parents and children to have fun, relax, socialise, keep fit, develop skills and explore

Construction Cost:

- LRCIP funding \$500,768
- Council funding of \$126,156



Planning for Our Future



- NUMBER LEGEND**
- 1 Divided lane entrance to enable controlled traffic entering and exiting the precinct.
 - 2 Gatehouse with pre-entry turnaround point.
 - 3 Large feature trees within the centre island provide a strong avenue leading into the sports complex.
 - 4 Large roundabout with signage directs visitors to the various areas of the sports complex.
 - 5 72 Bay formalised car park with shade trees.
 - 6 Oval loop road to provide access for vehicle based spectators.
 - 7 Large feature shade trees to add structure to the landscape and shade during summer.
 - 8 2.8m (w) Shared gravel exercise pathway around the perimeter of the complex.
 - 9 Buffer planting consisting of Tasmanian native trees, shrubs and groundcovers.
 - 10 Open space for informal training purposes.
 - 11 Medium size shade trees to provide structure to the landscape and shade during summer.
 - 12 Combined 140 x 160m AFL and Cricket Oval
 - 13 Low picket fence to enclose the oval.
 - 14 Regional Football & Cricket Clubrooms incorporating AFL & Cricket Australia standard, multi-pender facilities in addition to Club House & function Areas with all-access capability.
 - 15 8 Bay disabled & dignitary car park.
 - 16 Lays for drop off/pick up and bus parking for the adjoining building.
 - 17 12 Bay AFL and Cricket car park.
 - 18 Lockable 3 bay cricket nets.
 - 19 Existing creek bed to be revegetated with Tasmanian native trees, shrubs and ground covers, whilst maintaining clear views through out for passive surveillance.
 - 20 2m (w) Concrete loop path to encircle the adventure playground and to provide a connection to the gravel perimeter pathway.



- 21 User pays Adventure Playground with nature based play elements, water play, living fox and kids clubhouse.
- 22 Skate circuit for skateboards, scooters and roller blades.
- 23 20 bay car park with disabled bays for close proximity to the community centre.
- 24 Multi-purpose Community Centre incorporating gymnasium administration / meeting spaces, on-line access centre history room, etc. Also available for social and formal gatherings and functions.
- 25 Ornamental feature trees add shade and seasonal change between the Community Centre and swimming pool complex.
- 26 Community Aquatic Centre with locally-scaled indoor swimming / recreation centre incorporating 25 meter pool toddlers pool, free electric BBQ's, shade area, change room toilets and kiosk in an access-for-all environment. Appropriately equipped to cater for local / inter-school / club swimming carnivals.
- 27 Designated bus parking area for the complex.
- 28 Four netball courts.
- 29 Designated pedestrian access point with a 3m (w) pathway leading through the sports complex.
- 30 Four tennis courts with tennis clubhouse.
- 31 80 Bay car park centrally placed to accommodate the Community Centre, swimming pool complex, netball court, tennis courts and lawn bowls complex.
- 32 Multi-purpose Community Bowls Club Croquet facility incorporating indoor arena, clubrooms & outdoor links the fosters interaction of all age groups.
- 33 Green keepers shed.
- 34 Wetlands and water storage for irrigation purposes around the sports complex.

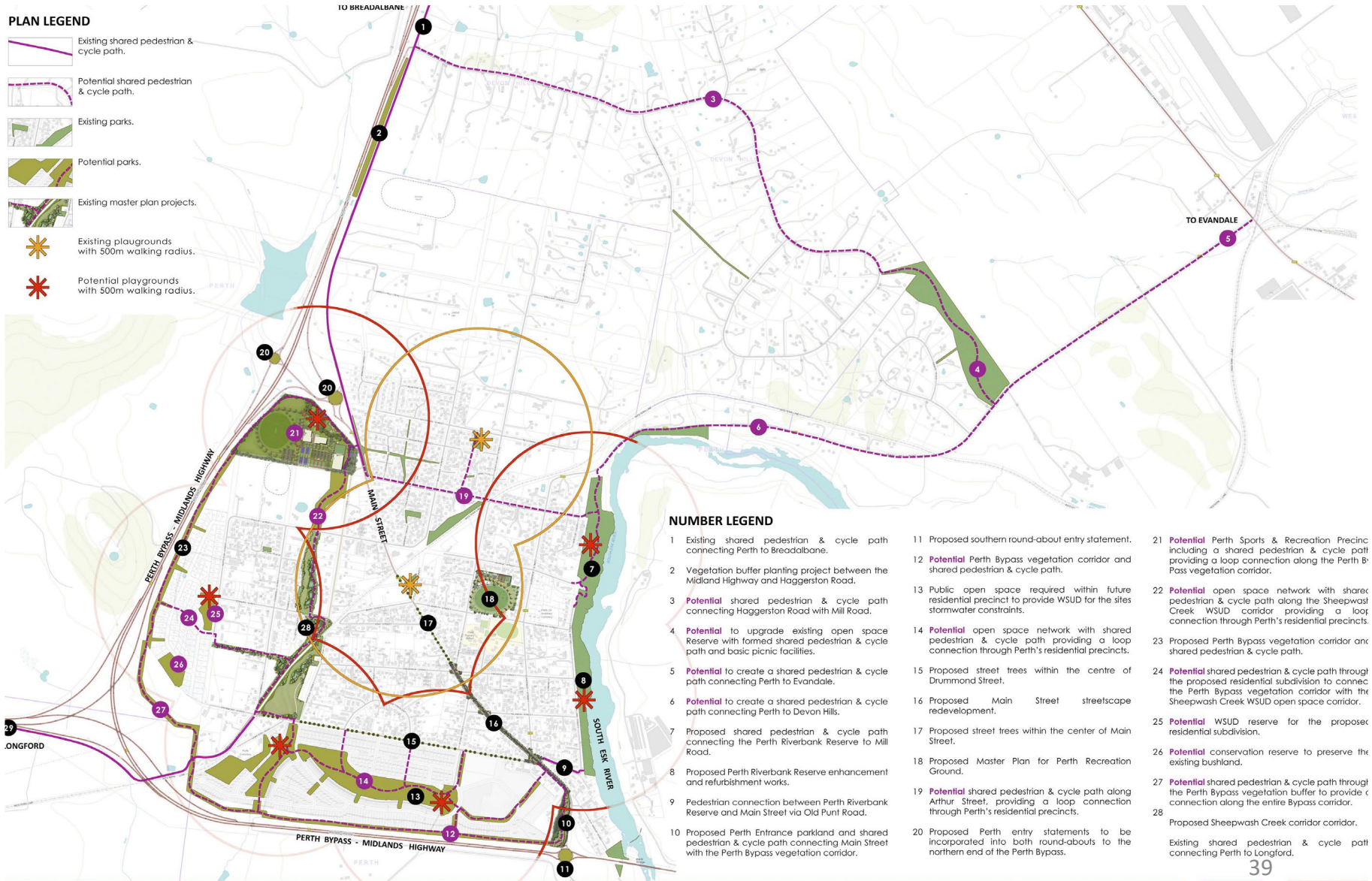


Perth Combined Projects Plan



PLAN LEGEND

- Existing shared pedestrian & cycle path.
- Potential shared pedestrian & cycle path.
- Existing parks.
- Potential parks.
- Existing master plan projects.
- Existing playgrounds with 500m walking radius.
- Potential playgrounds with 500m walking radius.



NUMBER LEGEND

- 1 Existing shared pedestrian & cycle path connecting Perth to Breadalbane.
- 2 Vegetation buffer planting project between the Midland Highway and Haggerston Road.
- 3 Potential shared pedestrian & cycle path connecting Haggerston Road with Mill Road.
- 4 Potential to upgrade existing open space Reserve with formed shared pedestrian & cycle path and basic picnic facilities.
- 5 Potential to create a shared pedestrian & cycle path connecting Perth to Evandale.
- 6 Potential to create a shared pedestrian & cycle path connecting Perth to Devon Hills.
- 7 Proposed shared pedestrian & cycle path connecting the Perth Riverbank Reserve to Mill Road.
- 8 Proposed Perth Riverbank Reserve enhancement and refurbishment works.
- 9 Pedestrian connection between Perth Riverbank Reserve and Main Street via Old Punt Road.
- 10 Proposed Perth Entrance parkland and shared pedestrian & cycle path connecting Main Street with the Perth Bypass vegetation corridor.
- 11 Proposed southern round-about entry statement.
- 12 Potential Perth Bypass vegetation corridor and shared pedestrian & cycle path.
- 13 Public open space required within future residential precinct to provide WSUD for the sites stormwater constraints.
- 14 Potential open space network with shared pedestrian & cycle path providing a loop connection through Perth's residential precincts.
- 15 Proposed street trees within the centre of Drummond Street.
- 16 Proposed Main Street streetscape redevelopment.
- 17 Proposed street trees within the center of Main Street.
- 18 Proposed Master Plan for Perth Recreation Ground.
- 19 Potential shared pedestrian & cycle path along Arthur Street, providing a loop connection through Perth's residential precincts.
- 20 Proposed Perth entry statements to be incorporated into both round-abouts to the northern end of the Perth Bypass.
- 21 Potential Perth Sports & Recreation Precinct including a shared pedestrian & cycle path providing a loop connection along the Perth Bypass vegetation corridor.
- 22 Potential open space network with shared pedestrian & cycle path along the Sheepwash Creek WSUD corridor providing a loop connection through Perth's residential precincts.
- 23 Proposed Perth Bypass vegetation corridor and shared pedestrian & cycle path.
- 24 Potential shared pedestrian & cycle path through the proposed residential subdivision to connect the Perth Bypass vegetation corridor with the Sheepwash Creek WSUD open space corridor.
- 25 Potential WSUD reserve for the proposed residential subdivision.
- 26 Potential conservation reserve to preserve the existing bushland.
- 27 Potential shared pedestrian & cycle path through the Perth Bypass vegetation buffer to provide connection along the entire Bypass corridor.
- 28 Proposed Sheepwash Creek corridor corridor.

Perth Sports Centre & Community Centre Project

- Stage 1 requirement: \$11.4m
- Regional football and cricket clubrooms: \$7.95m
- Lockable 3 bay cricket nets: \$0.1m
- AFL oval: \$1.1m
- Access road and parking: \$1.88m
- Exercise pathway: \$0.33m
- Dependent on the timeframe for subsequent project stages, the total estimated capital cost is in excess of \$50m



Public Open Space Plan: Napoleon Street Perth

Napoleon
Street Perth
Subdivision:

- 116 lots
- 19.14ha

Includes:

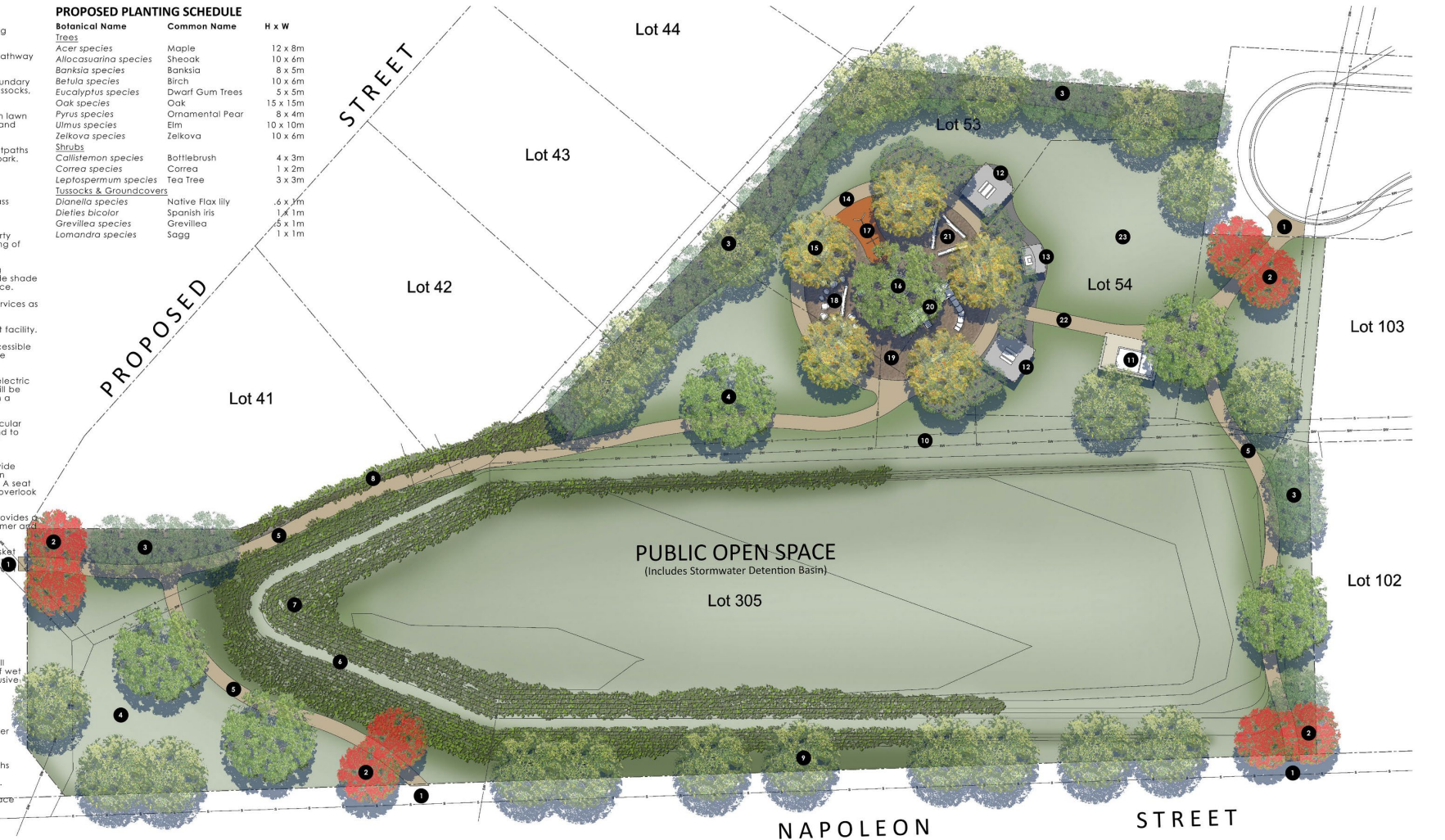
- new municipal park
- playground
- stormwater detention area

NUMBER LEGEND

- 1 Pathway connections with adjoining streets.
- 2 Signature trees to highlight every pathway connection to adjoining streets.
- 3 Screen planting along property boundary to consist of native trees, shrubs, tussocks, and groundcovers.
- 4 Large ornamental trees within open lawn areas to provide seasonal interest and shade in summer.
- 5 1800mm (w) exposed concrete footpaths to form a network throughout the park.
- 6 Informal path along the top of the proposed detention basin mound.
- 7 Slopes greater than 1:4 shall be mass planted with native grasses due to mechanical mowing restrictions.
- 8 Planting buffer between the property boundary and pathway to consist of hardy narrow shrubs and tussocks.
- 9 Large evergreen shade trees along Napoleon Street frontage to provide shade and visual interest to the open space.
- 10 Proposed sewer and stormwater services as per engineer's drawings.
- 11 Future inclusive single cubicle toilet facility.
- 12 Picnic shelter (5 x 5m), over an accessible picnic table and coloured concrete pavement.
- 13 Shelter (4 x 2m), over an inclusive electric BBQ with two hotplates. The BBQ will be linked to the adjoining shelters with a 1500mm (w) concrete path.
- 14 1500mm (w) coloured concrete circular path to envelop the play space and to provide inclusive access to all play elements.
- 15 Five large ornamental trees to provide seasonal interest as well as shade in summer and solar access in winter. A seat will be placed under each tree to overlook the playspace.
- 16 Large Oak tree centrally placed provides a focal point as well as shade in summer and solar access in winter.
- 17 Three boy swing consisting of a basket for all abilities, toddler swing and an adult swing. Earth brown coloured pour rubber soft fall provides all-weather access to the play equipment.
- 18 Large natural hardwood timber logs and tree stump steppers, together with various sized stone boulders provide interpretive play and quiet play opportunities.
- 19 Surfacing within the playspace shall consist organic mulch with areas of wet pour rubber softfall to provide inclusive access to all play elements.
- 20 Multi-play structure for a variety of age groups and challenges.
- 21 Three large natural hardwood timber logs to provide interpretive play and quiet play opportunities.
- 22 1800mm (w) Exposed concrete paths connects the playspace with the network paths throughout the park.
- 23 Open lawn area for run-around space close to the playspace.

PROPOSED PLANTING SCHEDULE

Botanical Name	Common Name	H x W
Trees		
<i>Acer</i> species	Maple	12 x 8m
<i>Allocasuarina</i> species	Sheoak	10 x 6m
<i>Banksia</i> species	Banksia	8 x 5m
<i>Betula</i> species	Birch	10 x 6m
<i>Eucalyptus</i> species	Dwarf Gum Trees	5 x 5m
Oak species	Oak	15 x 15m
<i>Pyrus</i> species	Ornamental Pear	8 x 4m
<i>Ulmus</i> species	Elm	10 x 10m
<i>Zelkova</i> species	Zelkova	10 x 6m
Shrubs		
<i>Callistemon</i> species	Bottlebrush	4 x 3m
<i>Correa</i> species	Correa	1 x 2m
<i>Leptospermum</i> species	Tea Tree	3 x 3m
Tussocks & Groundcovers		
<i>Dianella</i> species	Native Flax lily	.6 x .3m
<i>Dielytes bicolor</i>	Spanish iris	1 x 1m
<i>Grevillea</i> species	Grevillea	5 x 1m
<i>Lomandra</i> species	Sagg	1 x 1m



Ross Recreation Ground

- Proposed upgrades include:
 - Clubrooms, including inclusive changerooms
 - Public toilets
 - Main entry point & access points
 - Ticket booth refurbish
 - Perimeter fence
 - Cricket wicket
 - Gravel circuit and oval perimeter fence
 - New sheds
 - Dog exercise park
 - Picnic shelter
 - Rodeo ground
 - Shade sails and seating
- Cost estimate: \$0.5m
- User groups:
 - Veterans Cricket Tasmania – Male & Female
 - Ross Rodeo
 - Community Groups
 - Ross & wider community



Northern Midlands Community Hub Model

- Council has expressed an interest in the vacant Tasmania Police buildings in George Street, Longford to create multi-purpose, community-friendly meeting spaces, whilst the adjacent residence would be repurposed to create a neighbourhood house-style service/ youth space, together open space
- If the properties are transferred to Council at no cost to Council, Council commits to funding the repurposing component of the project at an estimated cost of \$450,000
- Council proposes the annual operating cost of the hub – estimated at \$200,000 – be funded by equal contributions by the State Government, Council and the community sector



Conclusion

Northern Midlands elected members and the executive team are of the view that the future of the NMC is prosperous, sustainable and well placed to provide for, and to meet the needs of the community now and into the future. There are few benefits identified through proposed amalgamations.

NMC opposes all scenarios proposed by the Board in the Information Packs. It does not support any forced amalgamation or boundary adjustments throughout the Review process. NMC does not support any voluntary merger with other council(s), wishing to protect its boundaries and for the boundaries to remain as they presently are.



Questions?

Thank You

Street Address:

13 Smith Street, Longford TAS 7301, Australia

Postal Address:

PO Box 156, Longford TAS 7301, Australia

Tel: (03) 6397 7303

Fax: (03) 6397 7331

Email: council@nmc.tas.gov.au

www.northernmidlands.tas.gov.au

