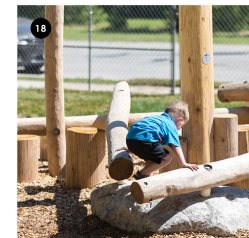
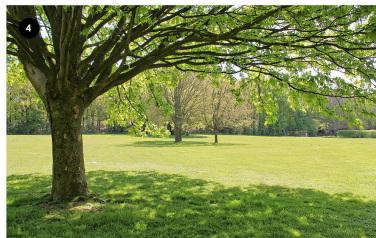
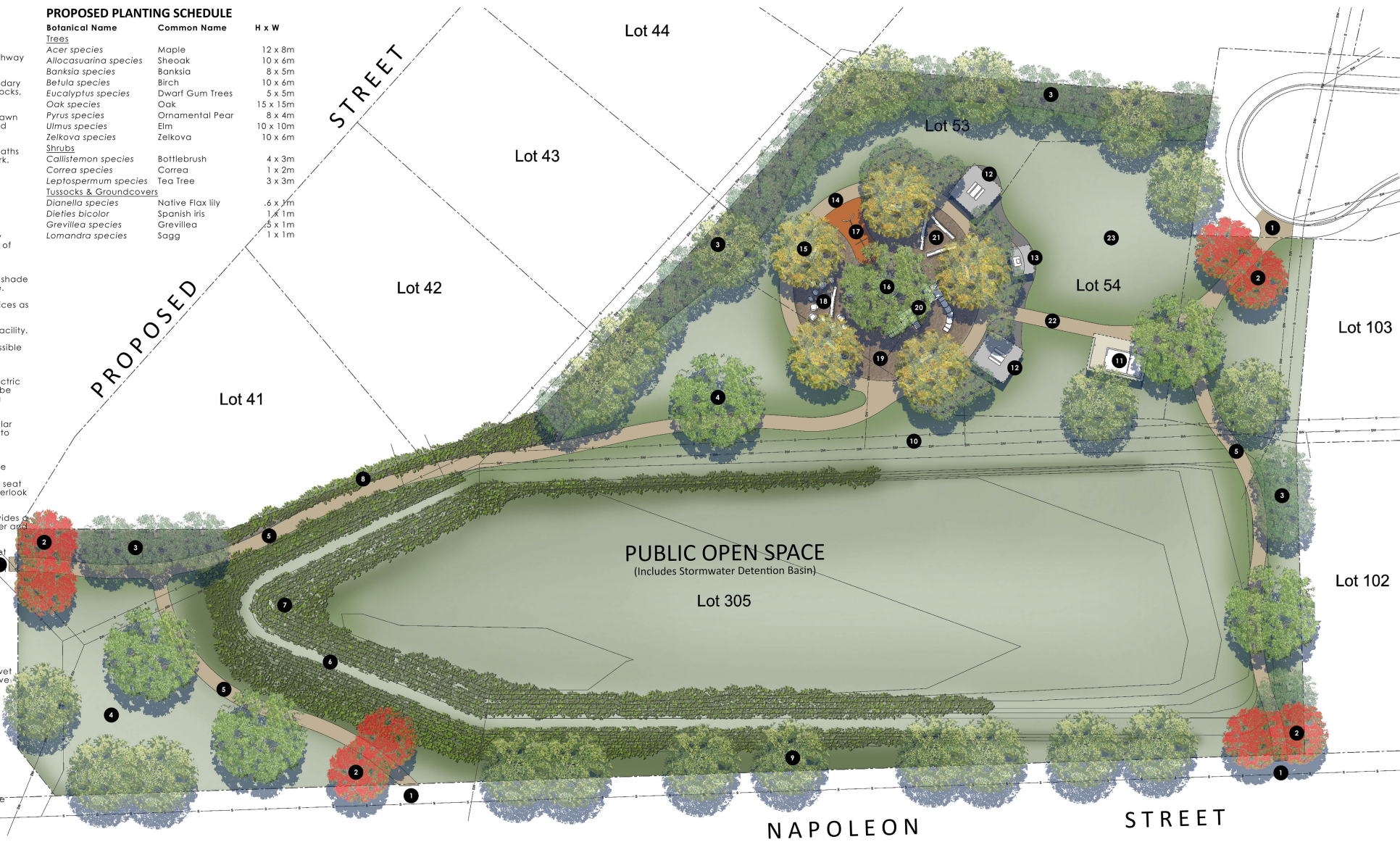


**NUMBER LEGEND**

- 1 Pathway connections with adjoining streets.
- 2 Signature trees to highlight every pathway connection to adjoining streets.
- 3 Screen planting along property boundary to consist of native trees, shrubs, tussocks, and groundcovers.
- 4 Large ornamental trees within open lawn areas to provide seasonal interest and shade in summer.
- 5 1800mm (w) exposed concrete footpaths to form a network throughout the park.
- 6 Informal path along the top of the proposed detention basin mound.
- 7 Slopes greater than 1:4 shall be mass planted with native grasses due to mechanical mowing restrictions.
- 8 Planting buffer between the property boundary and pathway to consisting of hardy narrow shrubs and tussocks.
- 9 Large evergreen shade trees along Napoleon Street frontage to provide shade and visual interest to the open space.
- 10 Proposed sewer and stormwater services as per engineer's drawings.
- 11 Future inclusive single cubicle toilet facility.
- 12 Picnic shelter (5 x 5m), over an accessible picnic table and coloured concrete pavement.
- 13 Shelter (4 x 2m), over an inclusive electric BBQ with two hotplates. The BBQ will be linked to the adjoining shelters with a 1500mm (w) concrete path.
- 14 1500mm (w) coloured concrete circular path to envelop the play space and to provide inclusive access to all play elements.
- 15 Five large ornamental trees to provide seasonal interest as well as shade in summer and solar access in winter. A seat will be placed under each tree to overlook the playspace.
- 16 Large Oak tree centrally placed provides a focal point as well as shade in summer and solar access in winter.
- 17 Three bay swing consisting of a basket for all abilities, toddler swing and adult swing. Earth brown coloured pour rubber soft fall provides all-weather access to the play equipment.
- 18 Large natural hardwood timber logs and tree stump steppers, together with various sized stone boulders provide interpretive play and quiet play opportunities.
- 19 Surfacing within the playspace shall consist organic mulch with areas of wet pour rubber softfall to provide inclusive access to all play elements.
- 20 Multi-play structure for a variety of age groups and challenges.
- 21 Three large natural hardwood timber logs to provide interpretive play and quiet play opportunities.
- 22 1800mm (w) Exposed concrete paths connects the playspace with the network paths throughout the park.
- 23 Open lawn area for run-around space close to the playspace.

**PROPOSED PLANTING SCHEDULE**

Botanical Name	Common Name	H x W
<b>Trees</b>		
Acer species	Maple	12 x 8m
Allocasuarina species	Sheoak	10 x 6m
Banksia species	Banksia	8 x 5m
Betula species	Birch	10 x 6m
Eucalyptus species	Dwarf Gum Trees	5 x 5m
Oak species	Oak	15 x 15m
Pyrus species	Ornamental Pear	8 x 4m
Ulmus species	Elm	10 x 10m
Zelkova species	Zelkova	10 x 6m
<b>Shrubs</b>		
Callistemon species	Bottlebrush	4 x 3m
Correa species	Correa	1 x 2m
Leptospermum species	Tea Tree	3 x 3m
<b>Tussocks &amp; Groundcovers</b>		
Dianella species	Native Flax lily	6 x 3m
Dielytes bicolor	Spanish lily	1 x 1m
Grevillea species	Grevillea	5 x 1m
Lomandra species	Sagg	1 x 1m



**NAPOLEON STREET PARK**

Napoleon Street Perth Tasmania

**Landscape Concept Plan**

0 5 10m  
20 January 2023  
Issue A

